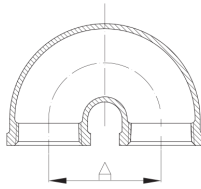


ASTM 180° RETURN ELBOW

- Fabrication Standards: American Standard Class 150
- Material: ASTM A197/A197M
- Dimensions: ASME B16.3, B16.14
- Union Dimensions: B16.39
- Threads: ASME B1.20.1
- Size Available: 1/8" - 8"

90U

180° Return Elbow



Size	Inch	1/2	2			
	mm	15	50			
Dim. (mm)	A	38.1	101.6			
Size	Inch					
	mm					
Dim. (mm)	A					

